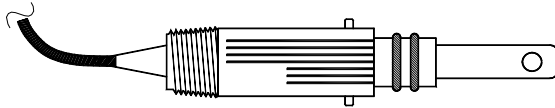


CONDUCTIVITY FAMILY

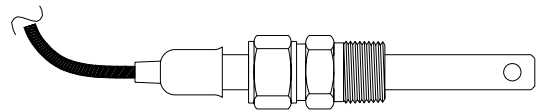
2/07



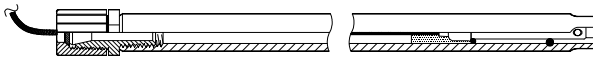
6103 GLENMONT • HOUSTON, TEXAS • 77081
800/522-7920 • FAX 713/772-4671 • 713/772-6641
www.VL-PC.com



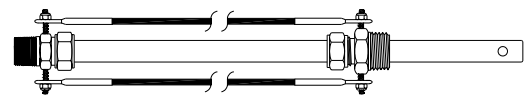
Twist-Lock Style



12mm with 1/2" MPT Compression Fitting



Submersible (MK1A)



Retractable with 1" MPT Compression Fitting

The Van London - Phoenix Co. two electrode conductivity sensors are compatible with most existing analyzers and are available in variety of mounting and temperature compensator configurations.

- Twist-lock & 12mm - sensors are extremely versatile and easily maintained.
Cell Constants: 0.1/cm or 1.0/cm
Standard Materials: 316SS electrodes/PEEK® insulator/Ryton® housing
- Retractable - sensors are designed to be removed and replaced with out shutting down the pressurized process line.
Cell Constants: 0.01/cm, 0.1/cm, 1.0/cm, and 10.0/cm
Standard Materials: 316SS electrodes & valve/PEEK® insulator
- Submersible - sensors are designed for use in open tanks or ditches.
Cell Constants: 0.1/cm or 1.0/cm
Standard Materials: 316SS electrodes/PEEK® insulator/ABS housing
- Tri-Clover - fittings are available for the Twist-lock adapter (see accessories).

SEE REVERSE SIDE FOR SENSOR SELECTION AND ACCESSORIES.

CONDUCTIVITY SENSORS AND ACCESSORIES

C19	x	x	14	-	xxSL	Twist-Lock	(Ryton® & 316SS & PEEK) Viton®
C75	x	x	10	-	xxSL	12mm	(316SS & PEEK) Viton®
C35	x	x	13	-	xxSL	Tube with fitting	(316SS & PEEK) Viton®
C18	x	x	12	-	xxSL	Submersible	(ABS & 316SS & PEEK) Viton®
<p><u>Lead Length</u> Specify Lead Length in feet (10 foot std.)</p> <p><u>Cell Constant</u> 1 = 0.01 2 = 0.1 4 = 1.0 7 = 10.0</p> <p><u>Automatic Temperature Compensator</u> B = PT100 ohm E = PT1000 ohm L = 10K ohm N = Ni 100 ohm Yokogawa® Q = 3K ohm thermistor</p> <p style="text-align: center;"><i>Consult the factory for additional options.</i></p>							

CONDUCTIVITY ACCESSORIES:

PART NO.	DESCRIPTION
1500142	¾" MPT Twist-Lock Adapter (316SS)
1500143	1" MPT Twist-Lock Adapter (316SS)
150014SV-1	Tri-Clover Twist-Lock Adapter (316SS)
3000426	½" MPT Gland Fitting for 12mm (316SS)

TEMPERATURE COMPENSATOR CHART	
<u>Yokogawa</u> ®:	All models - PT100
<u>Rosemount</u> ®:	Model 1055 - PT1000 Model 54eC & 3081C - PT100 Model 1054C & 2081C - PT100
<u>ABB/TBI</u> ®:	Model TB82TE - PT100
<u>Great Lakes</u> ®:	Model C33 & C53 - PT100
<u>E & H</u> ®:	Model CLM 253/223 - PT100 Model CLM 431/CLD 431 - PT100

Ryton is a trademark of Phillips 66 Company®.

Kynar is a trademark of Pennwalt Corporation®.

Teflon is a trademark of E.I. Dupont de Nemours & Company®.