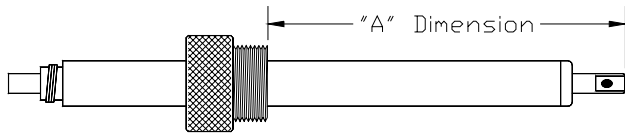


ENDRESS + HAUSER® DIRECT REPLACEMENTS

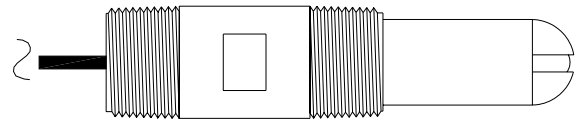
2/07



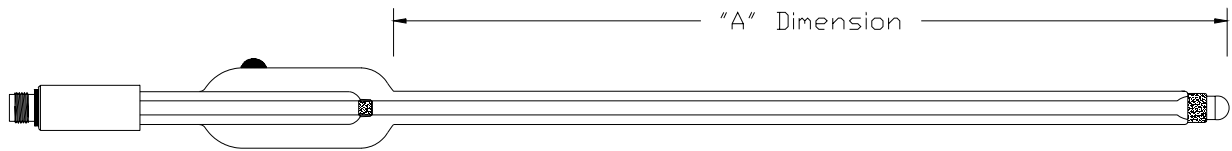
6103 GLENMONT • HOUSTON, TEXAS • 77081
800/522-7920 • FAX 713/772-4671 • 713/772-6641
www.VL-PC.com



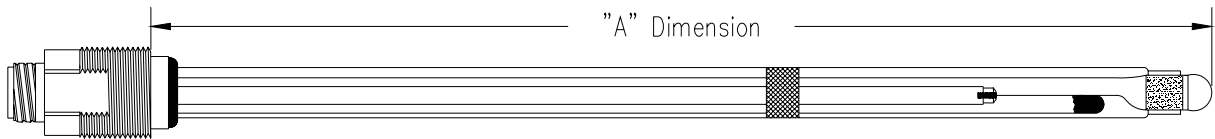
Tuff-Fet™ pH w/ S8 Fitting



1" MPT Housing pH or ORP



Refillable pH or ORP w/ S7 Cap



Sealed pH or ORP w/ S8 Cap

Description

This new line of direct replacements for E&H®-style electrodes is now available for a wide variety of pH or ORP applications. They are designed dimensionally to retrofit with existing installations. Expensive equipment changes are no longer necessary. A combination of several reference fills or reference junctions are available to suit specific application requirements. Custom designs are not uncommon.

Design Features

The Solid Polymer Reference (SPR™) is Van London-Phoenix Co.'s polymer-based reference comparable to Ingold's® Xerolyt™. Internal "shorting" is more inherent with an open-reference style electrode in pressurized applications. Unlike E&H®, Van London-Phoenix Co. pairs the SPR™ with a ceramic junction to eliminate possibilities of both electrode shorting and reference poisoning. For additional reliability, the gel is forced into the junction pores during the manufacturing process, virtually eliminating junction clogging by process particulate matter.

Specifications

Measurement Types: GXV - Multi-purpose pH glass formulation (0-14.00 pH)

Reference Types: SPR™ - Double junction, **SOLID POLYMER REFERENCE** (0-130°C)
Tuff-Tip™ - New design incorporating larger reference junction surface area & electrode guard.

LCJ - Dramatically increases the reference junction surface area. Standard material is ceramic but porous Teflon and porous Kynar are available.

ORDERING INFORMATION:

- Sealed pH or ORP w/ S8 Cap Design (glass)

I - 100X - ZZZ pH electrode

S79 X 6640 - ZZZ ORP electrode

* X = Temperature Compensator Option

ZZZ = "A" Dimension in millimeters (refer to drawings on front page)

Options are 120, 225, 325, 400 & 425

- 1" MPT Housing (Kynar™)

V - 500X - YYY pH electrode

16 X 6083G - YYY ORP electrode

* X = Temperature Compensator Option

YYY = Lead length in feet & Connector Option

- Tuff-Fet™ pH w/ S8 Fitting (Also see Tuff-Fet™ Spec Sheet)

H135 - ZZZ

ZZZ = "A" Dimension in millimeters (refer to drawings on front page)

Options are 120 & 225

- Refillable pH or ORP w/ S8 Cap

I - 2000 - DL - ZZZ pH electrode

I - 2000 - DL - ZZZ ORP electrode

ZZZ = "A" Dimension in millimeters (refer to drawings on front page)

Options are 120, 150, 200 & 250

* Temperature Compensator Options

0 = None

B = PT100

I = 3K Balco

- Accessories Available

- Wiring Adapters S8, S7, & K9 connectors
- 316 SS fittings for electrodes
- Calibration solutions
- Transmitters
- Wiring diagrams

Note: Spinning Cap design is standard on S8 design with a dimension greater than 120mm.

FOR ADDITIONAL PRODUCT INFORMATION,

CALL 713/772-6641 OR 800/522-7920

E-mail: sales@VL-PC.com

www.VL-PC.com

[E&H.pmd]